

GOLD WING TOURING ASSOCIATION



WASHINGTON STATE NEWSLETTER

January, 2011



SIMPLY STATED

GWTA ~ The best kept secret in the motorcycling industry.

As you all know, Cameron and I, and our staff, are all working hard and we are challenging every chapter to increase their membership. We have spoken of the tools available: tri-folds, bike hangers, advertisement of your runs and events, etc.; all to help you increase membership.

The other day, while thinking about what more we can do, it dawned on me that we have all been talking about how the GWTA needs more exposure. I have heard time and time again that we are a 'secret organization' so I think it's time we all need to work to make our organization better known.

In the past, we have stressed that we need to support our own chapters' events above all other events that may be happening. While I agree with this concept, it seems to instill a feeling that if I want to attend another organization's event I better do so incognito, which does nothing for promoting fun and friendship from GWTA.

I think the time has come to change our thinking. Attending other organizations events allows us the opportunity to network and share our fun and friendship. The more opportunity we have to get out there and show our colors, the better we advertise our own organization. There are wonderful venues and opportunities to be able to talk about our passion for motorcycles, share ride ideas with others, suggest roads others should experience, and share the fun! Find out when the people you are chatting with will be in your area and invite them to your meeting, or

Continued >>>>>

suggest they attend a meeting of another chapter. Be cautious to not sound like you are recruiting (that comes later), but are simply inviting them to come enjoy and experience the fun that we all know makes GWTA the best motorcycle organization in the country. Steer clear of discussing the politics; all clubs are going through their own tough times right now so just have fun! If you find it hard to initiate a conversation, as I do, just grab a member that you know has the gift of gab and hang with them. They can start the conversations; just be sure you take your opportunity to join in.

When it comes to recruiting, wait for the obvious signs the other party is ready. Listen for them to ask about the organization: When and where do we meet? What is expected of the membership? What are the dues? Then simply direct them to your local chapter website, the state website (www.gwta-wa.org) or the National website (www.gwta.org), for more information. Grab your tri-fold and write your name, membership number and chapter on it. Tell them to call you with questions and suggest that they attend a meeting first, or join you for a ride on one of your social events. It's all about timing and NOT pressure. If you can, get their name and number; then take baby steps.

Cameron and I will begin to notify the membership of upcoming non GWTA events in the monthly newsletters or through your chapter directors. Look for a new section in the State Newsletter, which is simply named "Around the Sound," for events.

We still want to be sure that our own chapters are being supported, so invite your new friends to one of our many chapter events. Let's just all be sure to give our own GWTA family first priority to keep our chapters strong, and let's get out there when we can and show off what we are all so proud to be a part of.

It's time we came out of hiding and started sharing and growing our fun and friendship.

HAPPY NEW YEAR EVERYONE!

~ *Steve and Cameron Gillit* ~

Washington State Directors

Simply go to the State website

(www.gwta-wa.org) and on the front page you

will be able to get a full size view of the

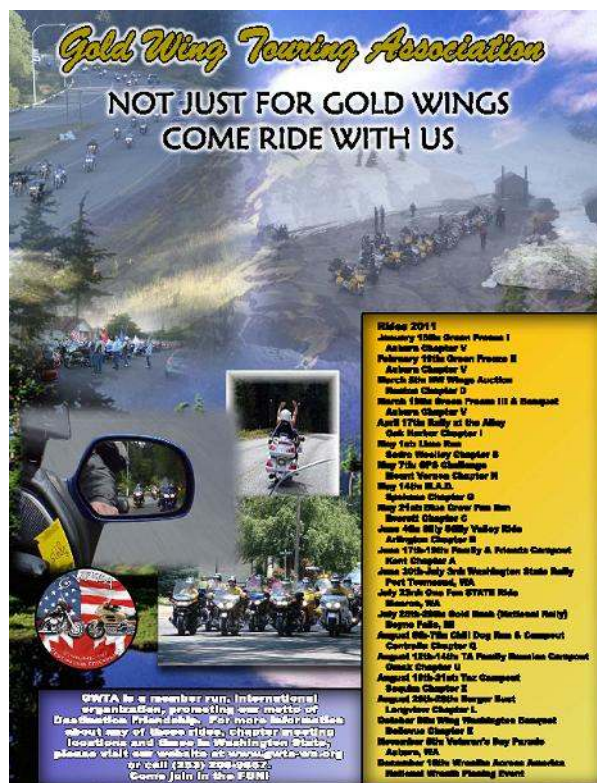
Washington State Wide Ride Flyer.

These flyers are being distributed at any

business that has a bulletin board!

So if you'd like some to post, contact your

Assistant State Director.





Chapter Meetings for the rest of January and into February

January 15: Chapter U (**NOTE:** *Chapter N has forfeited their meeting to be able to attend Green Freeze*)
January 16: Chapter I
January 22: Chapters M, B and Y
January 23: Chapter S
January 25: Chapter L Dinner Social (*this is a Tuesday evening social*)
February 5: Chapters C, G and Q
February 6: Chapter V
February 12: Chapters E and Z
February 13: Chapter A and D (*more info on Chapter D's meeting location and info to come*)

Coming up around the corner

January 15: Chapter V's Green Freeze I. Celebrating 24 years of Freezing Green. Starting at Hinshaw's in Auburn (1611 West Valley Hwy S); come on 2, 3 or 4 wheels! NOTE: Registration doesn't begin until 10am this year.

February 19: Chapter V's Green Freeze II. Yep - 3 months in a row but boy does it get the riding season going!!! Still starting at Hinshaw's in Auburn (1611 West Valley Hwy S) and only \$20 for all three rides; come on 2, 3 or 4 wheels! NOTE: Registration doesn't begin until 10am this year.

Into the future:

March 5: Chapter Ds NW Wings Drill Team 26th Annual Spaghetti Feed and Auction. Silent auction at 3pm, dinner at 4pm and LIVE auction at 5pm. What great things will they have on the auction block this year?

March 19: Chapter V's Green Freeze III & Banquet. This is it... the 3rd & final ride of Green Freeze for 2011. They're culminating the ride with their annual banquet, catered by Apogees. Dinner is only \$10. Starts at Hinshaw's in Auburn (1611 West Valley Hwy S) and ends at the Fife Community Center. Come on 2, 3 or 4 wheels! NOTE: Registration doesn't begin until 10am this year.

April 17: Chapter I's Cowboy Up Rally at the Alley. So... what do motorcycles and bowling pins have in common? Come to Chapter I's Rally at the Alley and find out. Guaranteed fun for everyone!! Three different rides; three times the fun. They won't explain it - you just need to come join the fun!!!

Gold Rush, 2011

Boyne, Michigan ~ July 24 - 29, 2011

Go to http://www.gwta.org/upcomingevents/gr/gr_info.htm for more information.

AROUND THE SOUND



January 22: GWRRA Chapter I Casino Night

Come on in to the Cow Big Top! An annual event put on at the Camp Murray Armory (exit 122 off I-5, Lakewood). Doors open at 4pm, silent auction from 5:30-8:30 and LIVE auction at 8:45pm. Bring non-perishable food for a food drive benefiting the Thurston County Food Bank.

January 30: PBTF Training Meeting (Pediatric Brain Tumor Foundation)

Ride For Kids Ride ~ 9/11/11

Here's a message from the PBTF task force: We are looking for anyone who would like to help get the word out about the Ride. On **January 30, 2011** we will be having a training meeting to give you the information you will need to present the story of Ride for Kids and The Pediatric Brain Tumor Foundation. There are approximately 20 different clubs (GWTA, GWRRA, Hog, Southern Cruisers, BMW, Star, etc.) in WA State and we would like to touch base with them all. The meeting will be held at 2401 Virginia Ave in Everett. If you are interested in attending or would like more information, please contact Mary Rairdin at 425-259-3904 (email: mmrairdin@aol.com).





DID YOU KNOW???



UPDATE on Wreaths Across America:

Well, we're through the holidays and we wanted to report on how well we did with our wreath purchases, honoring our vets and supporting GWTA.

Back in 2009, GWTA purchases only sponsored 27 wreaths. In 2010, we more than doubled that by purchasing 67 wreaths, placed on headstones all across America at national cemeteries. WAY TO GO GWTA

members! Let's aim to at least triple that number in 2011. It's NEVER too early to get your wreath ordered so visit their website at www.wreathscrossamerica.org and be ahead of the rest. Thank you to everyone who participated!



WREATHS-ACROSS-AMERICA.ORG
REMEMBER - HONOR - TEACH

In total, over 200,000 wreaths were placed all across the country.*



DID YOU KNOW YOUR CHAPTER HAS A SPECIAL LINK ON THE STATE WEBSITE?

When you go to the website (www.gwta-wa.org), on the left side bar there is a link to chapters and each of you have one. Simply click on your chapter (or check out any others). Is your chapter's event posted? Is the information about your chapter current? Did you know all you have to do is click on the "Page Update Form" at the top of your chapters link and you can update a number of things? Make sure Denny has your events flyer so that it can be posted there as well. His email is dawebguy@gwta-wa.org.



STP (Seattle To Portland Bicycle Challenge)

Lois Olson, our STP Coordinator, was scheduled for the first meeting of the year with Cascade Bicycle Club, on January 11th, to get the beginning stages of planning underway. However, Mother Nature had other plans for everyone with a snow storm. So their meeting has been postponed (date to be determined). But never-the-less, Lois needs to get every chapter's STP Focal info from you, as well as a list of who would like to participate this year (with your shirt sizes). If you are interested in being a focal and your chapter doesn't have one, this is a great way to get involved. Contact your CD to get the specifics. This years STP will be on July 9th & 10th.



National Raffle Tickets are here and they're ***HOT PINK!*** This year we're changing it up a bit and our very own Larry and Kay Cohenour are going to be the state's coordinators for receiving tickets. When you sell the national raffle tickets, get them to your Chapter Director who will in turn get them to their ASD (Assistant State Director). We're tracking each chapters sales for an in-state contest so be sure to fill out the tickets clearly so that you, your chapter and our region gets credit (I.E. for the back: you are in Region A, WA state and chapter S. You'll put A-WA-S on the back of your tickets). There's also the Region pizza party contest for the chapter who sells the most within Region A.

Let's always remember: raffle ticket sales are the way National raises funds to operate, just as our chapters have 50/50's to raise monies for their chapter activities.

Below are the meeting minutes from the National Operations meeting held on October 29 and 30, 2010 in Boyne, Michigan. This information is taken directly from the National GWTA website under "Meeting Agendas-Minutes."

Operations Meeting Notes
October 29, 30 2010
Boyne Mountain, Michigan

Attendees:

Reg A: JR Phillips
Reg B: Steve & Ralphine Andrus
Reg C: Rick Hinrichs
Reg F: Pat & Marie Beaudoin
Reg J: Kevin Welch & Marvin
Events Coordinators: Tony & Diane Manry
NERD: Mike & Carol Brush
Webmaster: John & Charmain Hunrath
Executive Directors Bruce & Linda (Chrysa) Keenon

Agenda:

Friday:

- Tour and informational meeting, Boyne Mountain facilities
- Gold Rush XXIV planning

Saturday:

- Operations
- Presentations from RDs and staff
- Halloween party

Minutes:

2011 Chapter Annual Registration fee will be held at \$50.00. This decision was made after considerable debate. The decision was in line with what members had communicated to their RDs. Chapters have two registration options: 1) Register at the \$50.00 annual fee and if an insurance certificate is needed, there will be a flat fee of \$125.00 for each certificate requested. This is and has been the on going program. 2) Register at the \$150.00 annual fee and all insurance certificates will be at no charge for that year. As a reminder, these fees will be due by November 30th as stated in the current form. The Chapter Annual Registration form will be on our web site. As a reminder, the result of this decision is that it does not cover the short fall in operational expense that we all have been talking about. **We will still need to find other avenues to cover this expense.** Region A was against lowering the registration fee.

There is an added incentive for all of our members to help sell tickets this year. For every 250 tickets a member sells, they will receive a free registration to this year's Gold Rush (can not be transferred to anyone unless a chapter turns in tickets). Just imagine what a chapter could do if they came up with a creative way to sell tickets and sold 2500 tickets or more within their chapter. 2500 tickets sold would translate to 10 free registrations for that chapter. What a great way to encourage every chapter to attend this year's Gold Rush; especially for the new members to experience what our Gold Rush is all about. Sell our GWTA Raffle Tickets to help our organization. Tracking the # of tickets sold per individual will be through each Region, State, and Chapter. We also decided to send every member 20 tickets through the US Postal Service mail from the TA office. Every year we receive complaints from members not getting any tickets.

Continued >>>>>

This decision covers every member. If the member chooses to not purchase the tickets, they can pass them on to someone who wants them or discard them. This is one of the few fund raisers that keeps the Association operating.

We have heard many concerns from our members not being able to print Touring News from the National Web Page. Very shortly members will be able to print Touring News from our National Website. Not only will you be able to print the current issue of Touring News, you will be able access up to two years of back issues of touring News. This option was discussed and voted on so that individuals that do not have access to computers can view the latest news of our Association. We also thought it can be used as an excellent recruiting tool for prospective new members. In the near future, Touring News can only be accessed by a security code by those who have current membership.

There was discussion about raising our membership dues or just changing it to a flat fee that would include all family members. The concerns focus on our members being covered under our insurance policy and the risks it puts the Association when wives and family members are not TA members.

Due to our expanding family (Allison is due to give birth on December 24th, 2010) and the holiday schedules through Feb1st, the TA office will be experiencing some down time. Please forward any and all questions to your Regional Directors. They will try to answer all your questions and get you a prompt response as quickly as possible. In the meantime, please wish Allison and Dusty best wishes and lots of sleep.

RaveNRide will be promoted and is an ongoing program to help offset operation costs (insurance, printing, office expenses, etc.) and Chapter Chartering fees for the Association. RaveNRide is an excellent win win program for everyone involved. We basically sell sponsorships to local businesses (Restaurants, Dealerships, Vendors, Chapter meeting destinations, etc). Then we as individuals or as a group ride to these places that are on a card of 8. When we visit the destination, the business stamps the card to validate. When the card is full, the members turns the card into the TA office to be put into an annual drawing to win \$500.00 for the individual and \$500.00 to a business. Anyone can sell sponsorships and the sponsors also get an ad in TN each month. The forms for the RaveNRide program are available through Jennifer Ellis. Contact Jennifer Ellis at: touring.news@gwtaco.com for the official rules and additional information.

Time was spent on reviewing member suggestions and comments from the Regions. Region E's feedback of raising dues to \$85.00 with several benefits. Region A's feedback of promotional meetings to increase membership. All consideration was given and some ideas were most helpful. We will keep the membership of our Association in the fore front when making decisions that will effect the whole of the Association.

We need to encourage members to register for Gold Rush XXIV in a timely manner. Boyne Mountain is an absolutely fantastic location. This facility has so much to offer. Friday all day was spent touring the facility, meeting the staff, viewing all the available lodging rooms, and even ziplining (some even turned upside down!). We went from the indoor water park to the golf courses to tennis courts to a fully equipped fitness center to Solace Spa to the zip lines, plus many more amenities. And this does not include mentioning the fantastic riding and scenery to be found in northern Michigan. The Odawa Casino Resort is also about 5 miles away from Boyne Mountain and they are offering several incentives for our members to come up and visit them. Our official theme is "International Summit" where members can dress and represent their favorite European country.

Continued >>>>>

For some creative fun; Chapters, States, and Regions will be able to put their minds together to become the country they have always wanted to be from. Show your fellow Destination Friendship family what you are made of. We view this like a political campaign convention where members have signs and banners to represent the country they have chosen.

We revised the 18 month plan to new programs. In addition to current member and fund raisers, we will be adding two new ideas that were discussed in rough draft to be finalized at a later date.

Several Regions presented on how to recruit other motorcycle organizations, how to promote Rave N Ride, and bike ticket sales. We also reviewed how to best promote ourselves at a national motorcycle show.

We discussed what to do about those Chapters who have several people that attend meetings and events that are non GWTA members and the liability risks and unfairness to the paying memberships it creates. It should not be tolerated at any level.

We discussed updating our Website and will see the new format after the 1st of the year.

Time did not allow us to let everyone present but what we all heard was worthwhile.

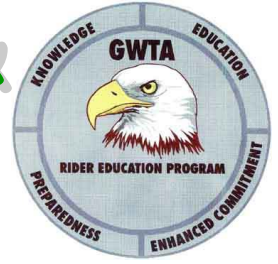
Thank you to everyone that attended the Operations meeting as it took personal money and time.

You are all greatly appreciated and we look forward to implementing all that was accomplished at this meeting. Communication is the life link to keeping our Association alive.

God Bless,
Bruce & Linda Keenon



Rider Education & Safety Corner




Hello everyone and welcome to 2011!

I have been pondering over the past year and give thanks that my family is healthy and happy. I made a few changes in my life as I went full time as a school bus driver, bought a new motorcycle and became the Rider Education & Safety Director for GWTA State (but I did turn down two offers to become an officer in my HOG chapter). We have seen changes occur in our GWTA chapters' safety staff and we are committed to working with these new people to make their jobs easier and to meet your needs.

I am reflecting on the loss of members in both GWTA and HOG over the past year.

I read about motorcycle accidents and I think how could these tragedies have been prevented? While some are the fault of the rider, some are not and when I hear of these accidents, I continually ask myself WHY? I question why would a person get on a motorcycle and make the decisions they did? WHY would anyone climb on a motorcycle and proceed to drive 157 miles an hour down the freeway? *WHY?* Then there are the accidents you have no control over. I read about an accident in California where a group went out for an anniversary ride and as they were enjoying their ride, a car hit the group head on. What could they have done to prevent this accident? Let's think about this...

As we are getting ready for the 2011 riding season, think about the following: Is my bike ready for the season? Here is a list of things to consider:

 Perform the T-Clock inspection on your bike. T-Clock stands for:

T – Tires and Wheels – pressure, tread depth, wear patterns such as cupping, nails.

C – Controls – throttle, clutch, brake's operating correctly, etc.


L – Lights – all lights are working.


O – Oil – time for a change? Do it now.

C – Chassis – no cracks, major dents, rust, etc.

K – Kickstand – operating correctly and in good working order.

You want to make sure everything is in proper order.

 Next check you're riding gear, make sure everything fits properly and replace items that are worn or may not fit appropriately.

 Check your helmet. Has it been dropped? Is it scuffed or scratched? It may require replacing now or in the very near future.

Continued >>>>>

🏍️ Once you have checked the bike and your gear, it's time to check *yourself*. I ride year round but if you only ride in ideal riding conditions, your riding skills may be a bit rusty. Before the riding season hits, make time to take your bike out for a short ride and check your skills. This will also provide an opportunity to check the bike out to make sure you and your bike are feeling ready. Find a place where there are no cars around and practice a few skills such as turning, U Turns, stopping, etc. You will find that it's a good idea to practice these skills before going out and riding in a group.

The start of our riding season is quickly approaching with Green Freeze being our first chapter event of the year on January 15th. These chapter events can be challenging while we are trying to read the route directions, and sometimes have to make sudden stops or turns. If you are not paying close attention, there is a real potential of colliding with another bike or bikes.

I want this to be a safe year of riding for everyone and if you or your chapter need help getting your group into top riding form, let me know; I'm here to help! For those chapters that have asked for a skills day, we will be happy to provide them so everyone can have fun and enjoy safe riding, whether riding solo or in a group environment.

For those chapters that would like to have a first aid class let me know so we can help with that also. I am researching having a first aid instructor that knows about first aid specifically for motorcyclists.

Have a great and safe year of riding!



Thank you and take care,
Ron Matthews
State Rider Education Director



GREEN FREEZE XXIV

2011 - Celebrating 24 Years of
Freezing Green
All Bikes Welcome

January 15 Green Freeze Ride I
February 19 Green Freeze Ride II
March 19 Green Freeze Ride III & Banquet

Starts at Hinshaw's Motorcycle Store
1611 West Valley Highway South
Auburn, WA 98001 (253) 939-7164
Registration is from 10:00 am - 11:30 am
Last Bike in: Will be posted at the start



What to look forward to:

PRIZES: Set of new tires; Lots of cash prizes
50/25/25 Jan. & Feb. / True 50/50 in March / Door Prizes
Fundraiser with proceeds going to Ride For Kids
(Pediatric Brain Tumor Foundation)
Great Food ~ Lots of Fun!!!

Registration fee gets you all 3 rides:
Rider/Passenger \$20.00 each
Kids 15 & under \$10.00 each
Optional Banquet Dinner \$10.00 each
Please make checks payable to:
"GWTA Chapter V"

Send Pre-Registration(s) to:
Lisa Alberts
33404 40th Ave SW
Federal Way, WA 98023

For more information, please contact:
Lisa Alberts (253) 874-9787
Dennis Ensey (253) 677-8019
Vonda Brest (206) 854-9341

Our website: www.auburnvalleywings.org

Banquet Location:
Fife Community Center
2111 54th Ave East ~ Phone: (253) 922-0900

Sponsored by:
GWTA ~ Auburn Valley Wings ~ Chapter V

Supported by:
Hinshaw's Motorcycle Store

Registration

Rider _____	Passenger _____
Organization _____	Organization _____
Chapter _____	Chapter _____
Banquet Dinner Purchased _____	Banquet Dinner Purchased _____
Jan Score: _____ Feb Score: _____	Jan Score: _____ Feb Score: _____
March Score: _____ TOTAL SCORE: _____	March Score: _____ TOTAL SCORE: _____

I understand that state law requires vehicle and operators to be appropriately licensed and endorsed and to carry their own liability insurance, when required, to operate on state roads and highways and that it is my responsibility to provide that insurance. I therefore release and hold harmless GWTA, event sponsors & supporters, participating merchants and event site owner and personnel from any responsibility for any damage or injury to my person or property that I may incur or cause to incur while participating in this event. I have read, understood and agree with the above statement.

Rider Signature and Date _____

Passenger Signature and Date _____

NW WINGS MOTORCYCLE DRILL TEAM

Proud members of the Goldwing Touring Association
Present



26th ANNUAL SPAGHETTI DINNER AND AUCTION
Saturday March 5th 2011
SILENT AUCTION 3 PM * DINNER 4 PM
LIVE AUCTION 5 PM

Burien Elks Lodge
14006 1st Ave S.
Burien, WA 98168

PREPAID—\$18.00 / PERSON * \$8.00 / 6 to 12 YEARS OLD
AT THE DOOR—\$20.00 / PERSON * \$10.00 / 6 to 12 YEARS OLD
5 AND UNDER FREE
MAKE CHECKS PAYABLE TO NW WINGS DRILL TEAM (U.S.FUNDS)
Send Check and completed Registration Form to:

NW Wings Motorcycle Drill Team
C/O Al "Cowboy" Mitchell
13307 72nd Ave E.
Puyallup, WA 98373

For Additional Information, Or if you have New or Near New Items, Or a Service, you would like to Donate

PLEASE CONTACT
Cowboy Mitchell @ 253-538-4915(Puyallup)
Patrick Fitch @ 425-260-6241(Kent)
Sandy Svik @ 206-852-2547 (Seattle)

PLEASE PRINT

NAME _____
ADDRESS _____
CITY/STATE/ZIP _____ PHONE(____) _____
NO. ATTENDING: @ \$18.00 @ \$8.00 5 YEARS AND UNDER _____
TOTAL AMOUNT ENCLOSED \$ _____

**** CUT OFF DATE for PREPAID MAIL-IN (P/U Ticket at the Door) is Monday, FEB 28, 2011 ****

LOG ON TO WWW.AUBURNVALLEYWINGS.ORG FOR YOUR FLYER**

LOG ON TO WWW.NWWINGS.ORG FOR YOUR FLYER

LOG ON TO WWW.SKAGITVALLEYWINGS.COM FOR YOUR FLYER**

LOG ON TO WWW.NORTHASCADERIDERS.ORG FOR YOUR FLYER

LIME RUN

2011

Benefitting Make-A-Wish Foundation.

Sunday, May 1st
Burlington Eagles, 119 North Cherry St., Burlington

- Breakfast available at the Burlington Eagles for a \$7.00
- Registration 7:30 to 9:30, first bike out at 7:45, last bike out 9:45 AM
- 100% of registration fee donated to Make-A-Wish Foundation.
- First 300 registrations will receive a Lime Run pin.
- Bar-B-Que available for \$8.00 from 12:00 to 2:00 pm
- Drill Team performance at 2:00
- Awards and raffle drawing will be at closing ceremonies at 2:30 pm.

PRE-REGISTRATIONS MUST BE RECEIVED BY APRIL 1, 2011 TO BE ELIGIBLE FOR THE PRE-REGISTRATION DRAWING

MAIL REGISTRATION FORMS TO _____
Lime Run 2011
Patty Sweeney
6953 Danya Pl
Sedro Woolley, WA 98284

FOR MORE INFORMATION LOG ON
www.skagitvalleywings.com
CONTACT
PATTY SWEENEY
360-856-5289
dpsweeney@wavecable.com

REGISTRATION FORM-MAKE CHECK PAYABLE TO LIME RUN

Rider: _____	Registration: _____ x \$10.00 = _____
Passenger: _____	BBQ: _____ x \$8.00 = _____
Org: _____ Chpt: _____	Total = _____

(for prize distribution please indicate)

I/We the undersigned agree to and will comply with the rules covering this event. I/We further agree to hold harmless the GWTA, it's officers and representatives or persons sponsoring this event for loss or injury to myself or property in which I/We may become involved by reason of participation in this event.

Rider: _____ Passenger: _____

North Cascade Riders

GPS Challenge

A Motorcycle GeoCaching Scavenger Hunt
MAY 7th, 2011

BIKES OUT 8:00 - 10:00 BIKES IN 12:00 - 2:00
Yes, timed event. Each team has 4 hours to collect as many waypoints as possible.
SADLER HOMESTEAD RESTAURANT
1700 CONTINENTAL PLACE - MOUNT VERNON, WA 98278
CORNER OF COLLEGE WAY AND CONTINENTAL PLACE.

ALL BIKES/VEHICLES WELCOME
NOT MOTORCYCLE BRAND SPECIFIC
LOTS OF PRIZES
50/50

LEVELS OF DIFFICULTY
TEAMS OF 1 TO 4 BIKES/VEHICLES
MAP OPTION FOR NON-GPS OWNERS: BRING A MAP
MULTIPLE ROUTES

North Cascade Riders Supports Alzheimers Disease Research and the Birchmeier Memory Care Center in Sedro Woolley, WA

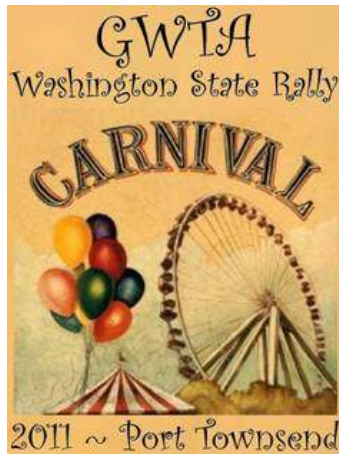
MAIL REGISTRATION TO: North Cascade Riders, 22863 Bridgwater Rd. Sedro Woolley, WA 98284

Contact Info: _____ GPS Level of Difficulty (Circle One)
Name/Phone #/Email _____ Don't have a GPS - Novice - Intermediate - Expert
Geocaching GPS GPS Coordinates Capable Geocaching Day

Bike/Vehicle #1 _____	Bike/Vehicle #3 _____
Print Name(s) _____	Print Name(s) _____
Bike or Car (circle one) _____	Bike or Car (circle one) _____
Bike/Vehicle #2 _____	Bike/Vehicle #4 _____
Print Name(s) _____	Print Name(s) _____
Bike or Car (circle one) _____	Bike or Car (circle one) _____

Number of Bikes in Group _____ X \$15.00 Per Bike = \$ _____

2011 WASHINGTON STATE GATHERING



State Rally Registration

Simply go to the state website (www.gwia-wa.org) to get a full size view of the flyer below and get signed up for a great time!



GWIA Washington State Gathering

June 30 thru July 3, 2011
 Jefferson County Fairgrounds
 4907 Landes Street, Port Townsend, WA 98368

Our Rally Theme is Carnival

Tent/tent Trailer Camping on site is FREE with registration.

On Site RV Camping: We have more than enough sites with power and water. The cost is ONLY \$30 for the whole rally. We highly encourage RVs to pre-register as quickly as possible. NOTE: You will pay for camping upon arrival (DO NOT INCLUDE WITH YOUR REGISTRATION FEES).

Fairground RV Sites: If you require full hook ups, within easy walking distance there are 18 sites for \$20 per night, many more with power and water (\$17/nt).

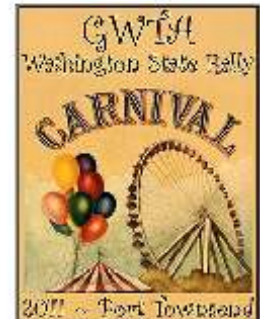
Included for all: private showers and RV dump station use. No reservations; first come first serve. Details, a fairgrounds layout map, and much more rally information at: <http://www.gwia-wa.org/rally.htm>

Paid pre-registration by April 30, 2011 will receive a free Saturday meal ticket and a chance at a \$100 pre-registration drawing.

Paid pre-registration before June 15, 2011 receives a free Saturday meal ticket.

Registrations postmarked **June 15, 2011** or later will not be eligible for the meal or drawing. The meal is a pre-registration incentive for which we must have an accurate head count for the caterer.

Day passes on site only (Not eligible for meal or T-shirt)



Included with registration:

- ◆ Saturday Meal (Pre-reg. only)
- ◆ Door Prizes
- ◆ Pre-registration Drawing
- ◆ Lots of Vendors
- ◆ Carnival Games
- ◆ Scenic Rides
- ◆ Light Parade Judging
- ◆ Bike Show & Shine
- ◆ Rider Education

Questions? Contact State Dir's.

Steve and Cameron Gillit
 statedirector@gwia-wa.org
 253-208-9867 or:
<http://gwia-wa.org/rally.htm>

Circle appropriate codes after name: A=Adult, C=Under 16, R=Rider, P=Passenger. Use name wanted on ID

Name(A C R P) _____	Name(A C R P) _____
Address _____	Address _____
City/St./Zip _____	City/St./Zip _____
Volunteer position held _____	Volunteer position held _____
Children names and ages _____	
Email _____	Organization/Chap. _____
First State Rally? yes <input type="checkbox"/> no <input type="checkbox"/> Camp on site <input type="checkbox"/> off site <input type="checkbox"/> RV on site <input type="checkbox"/> off site <input type="checkbox"/> Motel <input type="checkbox"/>	

Adults (16 & over) per person	\$30	x	=	
Children (ages 6-15) per person	\$10	x	=	
Children (under 6)	Free	x	=	
T-Shirts each (Add \$2 each for 4X)	\$15	x	=	
No refunds after 6/15/11			Total	

Make checks payable to; GWIA WA State

Mail Registration to; Yvonne Rux-Wright
 6428 E Lowell-Larimer Rd
 Snohomish, WA 98296-6023

Rally T-Shirts	Qty.	Color	Size
Pre-Order Only - Before June 15, 2011 The rally logo above will be on the front of the shirt.			Small
			Med.
			Large
Place quantity & color next to size you'd like to order. B=Burgundy W=White			XL
			2X
			3X
			4X

I/We the undersigned agree to and will comply with the rules covering this event. I/We further agree to hold harmless GWIA, its officers and representatives for loss or injury to myself or property incurred by reason of participation in this event.

Signature _____ Signature _____



WE'RE HERE TO SERVE YOU!!!! HERE'S HOW TO FIND US:

Steve & Cameron Gillit - State Director's Email: statedirector@gwta-wa.org

Larry & Kay Cohenour - Assistant State Director's North Email: 24theroad@clearwire.net
 Serving Chapters: B - I - C - N - M

Mick & Mary Rairdin - Assistant State Director's Central Email: mmrairdin@aol.com
 Serving Chapters: A - Q - E - Z - S

Terry & Cheryl Bartley - Assistant State Director's South Email: tcbartley@msn.com
 Serving Chapters: L - D - V

Jeff & Margie Richards - Assistant State Director's East Email: jeffnmargie@comcast.net
 Serving Chapters: G - U - Y

Terry & Lorine Hegel - Lorine: Treasurer / Terry & Lorine: Vendor Coordinator's
 Email: terry.lorine@comcast.net

Ron Matthews - Rider Education Director Email: red@gwta-wa.org

Denny Wright - Webmaster / Yvonne "Waffle" Rux-Wright - Rally Registration Coordinator
 Email: dawebguy@gwta-wa.org

Craig Alberts - Prize Guy / Lisa Alberts - Stores
 Email's: Home: nadatoy@comcast.net Lisa: lisaalberts@hinshawsmotorcyclestore.com

Lois Olson: STP Coordinator Email: ladygoldwinger95@gmail.com

On the web: www.gwta-wa.org